

buschbeck

MASONRY BBQS | OUTDOOR FIRES



*The Ultimate
Outdoor Fire, Barbecue
and Pizza Oven
.... all rolled into one.*

www.buschbeckgrills.com

Stoke your backyard with ambience and atmosphere with the famous Buschbeck outdoor fireplace.

Sear your steak to perfection over glowing embers, insert the Pizza Oven and bake up a slice of Italy or simply load up with firewood and enjoy the warmth and mood of the quartzite masonry fireplace.

Buschbeck Grills — Be the envy of your friends.

GRILL WITH WOOD & CHARCOAL

Amaze your friends with the outstanding taste of wood-fired steak or char-grilled chicken!

With the Buschbeck grill its simple to cook delicious meals over wood, charcoal or briquettes. Steak, sausages, vegetables all with a delicious flame grilled flavour!

For best results, use a high grade hardwood charcoal such as Aromachef Hardwood Lump Charcoal. Light using a chimney starter, or simply place the charcoal in the fireplace and start with firelighters.

Once the coals are glowing, slide in the grill rack, throw on some steaks and relax.....



BAKE FANTASTIC PIZZAS

Love Pizza?

Simple. The Buschbeck Pizza Insert is available as an optional extra to transform your Buschbeck grill into a backyard pizzeria.

Made from high quality stainless steel and with a soapstone pizza stone, you simply slide the pizza insert into the fire over hot coals and you're cooking. . . .

Experiment with different bases, concoct your favourite topping and let your Buschbeck grill do the rest.

Also perfect for baking puddings and small cakes. For ultimate temperature control, use with the optional Gas Insert.



ADAPT TO GAS OR ADD A ROTISSERIE

Combine the ambience and atmosphere of an outdoor fire with the convenience and control of gas cooking!

The Buschbeck Gas Insert slides in at the base of the fire box and connects to your LPG gas bottle. Ideal for use with the Pizza Insert option. (See page 15) Currently available in New Zealand only.

And if you're into cooking on the spit, the optional Buschbeck Rotisserie Insert works a treat. Made from high grade stainless steel and comes complete with an electric battery motor. Batteries not included.



OUTDOOR HEATING

With a Buschbeck Outdoor Grill you can light up a blaze, creating atmosphere and warmth on those cooler evenings. Your Buschbeck fire will become a popular gathering point on every special occasion.



GERMAN MADE QUALITY

Buschbeck fires are designed and manufactured in a state-of-the-art precast factory in Waldbröl, Germany.

DESIGN AND SAFETY

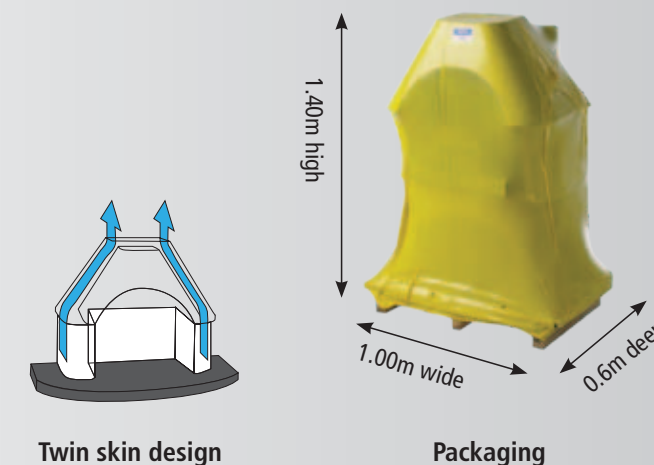
Legendary Buschbeck outdoor fireplace grills are imported from Germany, where they are designed and manufactured to the highest standards in the world.

Only Buschbeck grills utilise a unique concrete formula with a beautiful and rugged quartzite finish that lasts a lifetime – plus components that are steel reinforced for the ultimate in strength and durability with no painting or plastering required.

The two-shell construction of Buschbeck outdoor fireplaces/grills allows more than just charcoal barbecuing – the stoves can also be fired with wood and thus serve as an "all-round outdoor-fireplace". This also ensures a high level of safety, as the inner firebox is made from refractory concrete and air is constantly circulating between this and the outer quartz concrete skin.

Design and production processes are constantly being revised and refined to ensure an on-going high standard of quality.

All Buschbeck products pass stringent quality controls which also includes certification by TUV Rheinland Group.



Twin skin design

Packaging



MADE IN GERMANY



RONDO

The popular Rondo boasts a more rounded design and is finished in white quartzite concrete with a copper screen and flat chimney cap.



Rondo - shown with optional Cast Iron Grill

Product Code: HBBR
Dimensions: 2.080 H x 1.150 W x 0.700 D, Weight: Approx 510kg

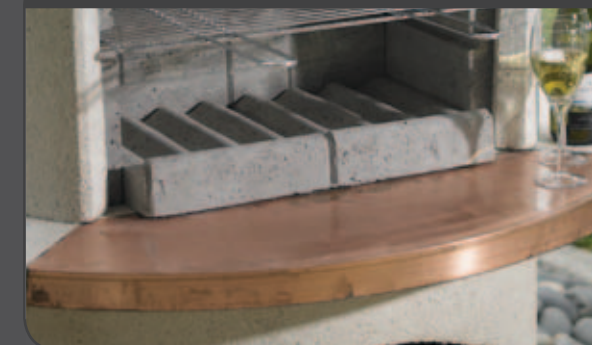
STANDARD KIT
Includes: Chrome Grill Rack / Adhesive



Optional Cast Iron Grill (See page 14)



Detail of the Genuine Copper Screen





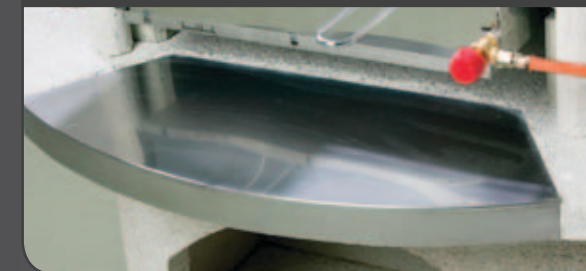
ELBA

A masonry BBQ for those who like things simple but classy. Snow white textured concrete and stainless steel combine for a clean contemporary look.

STANDARD KIT
Includes: Chrome Grill Rack / Adhesive



Detail of Stainless Steel Screen



Optional Base Extension (See page 15)



Elba - shown with optional Base Extension.

Product Code: HBBE
Dimensions: 2.060 H x 1.100 W x 0.650 D, Weight: Approx 460kg



ST MORITZ

A mixture of style and value. Elegance and function are united in this garden barbecue fireplace.

The two-tone appearance with the white quartz structure, contrasting brown combustion chamber and wood compartment, creates a distinctive appearance.

Standard kit includes:
Chrome Grill Rack / Adhesive

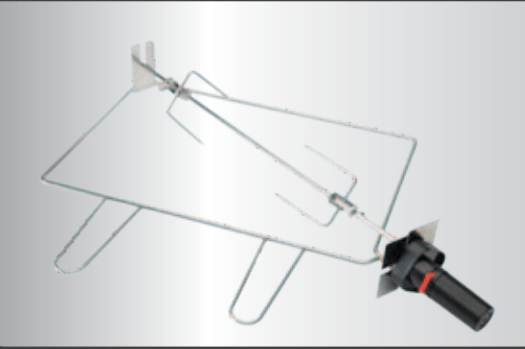


Optional Gas Insert (See page 15)



Currently available in New Zealand only

Optional Rotisserie Kit (See page 14)



St Moritz — Shown with optional Base Extension and Gas Insert

Product Code: HBBSM
Dimensions: 2.030 H x 1.100 W x 0.650 D, Weight: Approx 440kg



AMBIENTE

The stunning mix of white quartz concrete and high grade granite gives this fire/garden grill an exclusive aura.

The granite mantelpiece is easy to clean and keeps its classy look even after many years of use.

Standard kit includes:
Chrome Grill Rack / Adhesive



Optional Stainless Steel Ash Pan (Page 15)



Detail of Solid Granite Hearth



Ambiente—Shown with optional Base Extension and featuring the optional Ash Pan

Product Code: HBBA
Dimensions: 2.030 H x 1.150 W x 0.650 D, Weight: Approx 440kg

TOSCANA

The Toscana fireplace has an exclusive Mediterranean look and feel to it. The high quality white quartz structure is complimented superbly by the contrasting terracotta fire box and fuel storage area.

Adding to this overall stunning visual appearance is a real copper insert within the mantelpiece.



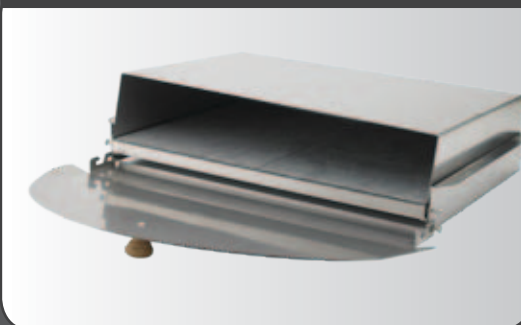
Toscana - shown with optional Pizza Insert

Product Code: HBBT
Dimensions: 2.030 H x 1.100 W x 0.650 D, Weight: Approx 440kg

STANDARD KIT
Includes: Chrome Grill Rack / Adhesive



Optional Pizza Insert (See page 14)



Optional Pizza Insert shown in use



GRILL BAR

Grill Bar In Use



A great garden barbecue at an attractive price.

The Grillbar will be the centre of attention at your next barbecue. Load up with charcoal and cook up a storm or stack with firewood and build a fire for atmosphere and warmth on those cooler evenings.

Product Code: HBBVGB
Dimensions: 0.930 H x 1.100 W x 0.650 D, Weight: Approx 280kg



Currently available in New Zealand only

SIDE TABLE

White quartz concrete side table that matches all of the Buschbeck fireplaces.

The square ends of the table top fit against the fireplace hearth to create a larger unit—ideal for food storage when cooking.

Product Code: HBBSTW
Dimensions 0.55 H x 0.70 D x 0.45 D, Weight: 160kg



Pizza Insert

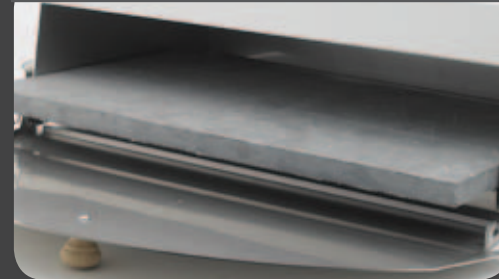
The optional stainless steel Pizza Insert with steatite plate (soapstone), slides into the firebox, in place of the grill.



Product Code: HBBPI
Dimensions W 54cm x D 34cm
Weight: Approx 13 kg



Soapstone Plate detail



Gas Insert



Currently available in New Zealand only

Product Code: HGGE30
Dimensions H 10cm x W 54cm x D 34cm, Weight: Approx 4 kg
Gas Type: Propane/butane
Includes regulator

Fire Grate / Ash Pan

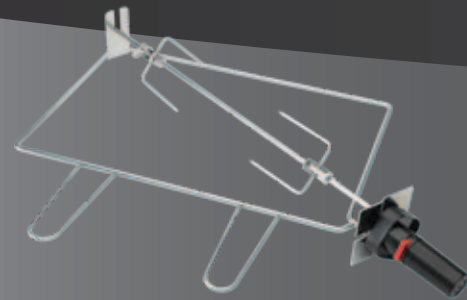
Stainless steel grate with slide out removable ash drawer.



Product Code: HGFAP
Dimensions W 46cm x D 30cm x H 9cm
Weight: Approx 4.5 kg

Rotisserie Insert

The optional stainless steel Rotisserie Insert is fantastic for cooking chicken. Comes complete with battery powered motor. (Batteries not included)



Product Code: HBBG5
Dimensions W 54cm x D 34cm
Weight: Approx 2 kg

Rotisserie Insert shown in position



Fireplace Cover

High quality cover, PVC coated.
2 year warranty on UV-stability.
Fits all Buschbeck fireplaces/BBQ-grills.



Product Code: HBBC Colour: Anthracite

Mortar Adhesive

Standard fireplace kits include sufficient adhesive for assembly. Optional extensions may require extra.

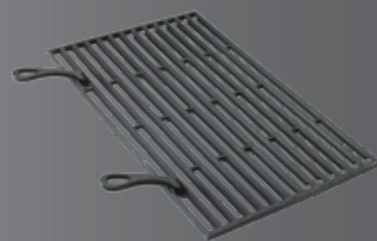


Product Code: HBBMW Weight: Approx 1.5 kg

Grills

Cast Iron Grill Rack

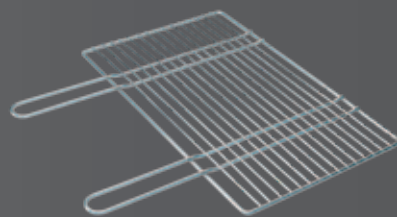
Heavy Duty grill rack with removable handles



Product Code: HBBHDGR
Dimensions W 54cm x D 34cm
Weight: Approx 5.2 kg

Chrome Grill Rack

Supplied standard with all fireplaces



Product Code: HBBGR
Dimensions W 54cm x D 34cm
Weight: Approx 1.2 kg
Material Chrome plated

Cast Iron Grill shown in position



Chimney Extensions



Standard:
Product Code: HBBCEW
Dimensions H 34cm
Weight: Approx 25 kg

Rondo:
Product Code: HBBCEW
Dimensions H 34cm
Weight: Approx 25 kg

Base Extensions



Standard: Product Code HBBBES
Dimensions H 20cm x W 104cm x D 65cm, Weight: Approx 75 kg

Rondo: Product Code: HBBER
Dimensions H 20cm x W 109cm x D 67cm, Weight: Approx 80 kg

www.buschbeckgrills.com



Distributed by



Phone: NZ 0800 438 274 AU 1800 839 842
Fax: +64 7 847 0205
Email: sales@riverleagroup.co.nz
Head Office: 11 Kells Place, Hamilton, New Zealand
www.riverleagroup.co.nz